

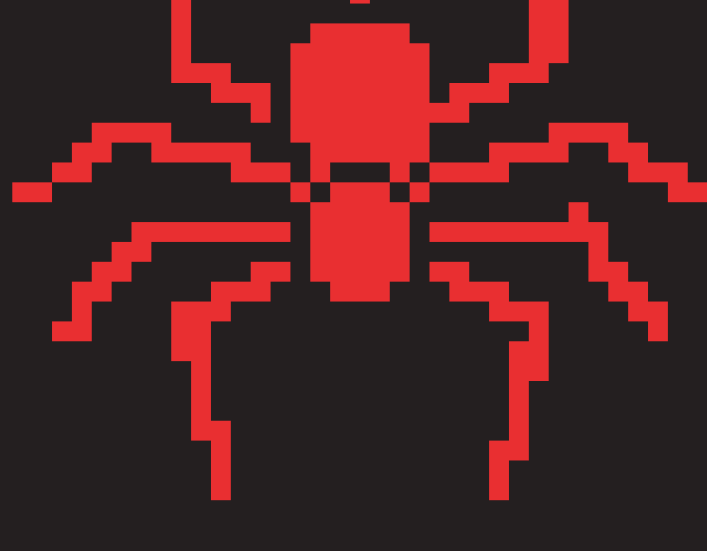
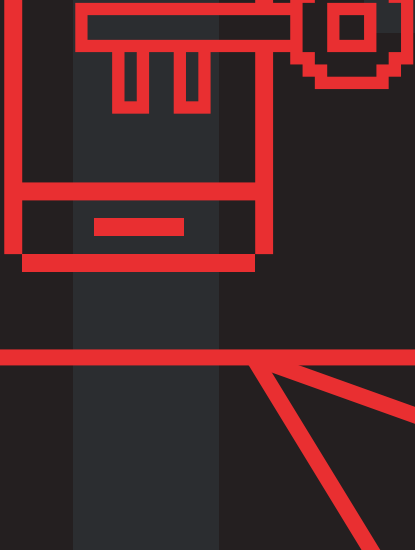
[SAFEGUARDING]

// SIMPLICITY

How Duo's Continuous Identity Security takes the headaches out of authentication

THE THREAT

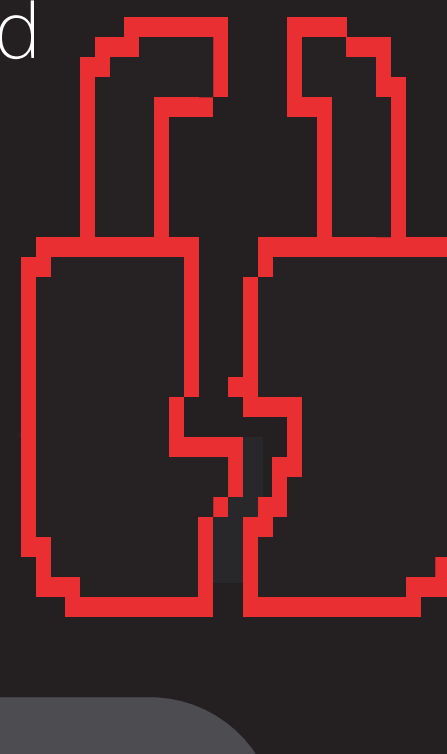
These days, logging into company apps can be a lot more complicated than it used to be. Hurdles such as **multiple logins**, **disparate software systems**, keeping track of **several passwords**, and meeting **regulatory compliance** can not only lead to a poor user experience, but they also incentivize users to find workarounds that limit the effectiveness of security controls – leaving your organization vulnerable to attackers.



THE TYPICAL FIX

In many instances, organizations would try to implement solutions that, while well-intended, would simply end up being the equivalent of duct tape and chewing gum. These stopgap solutions usually include:

- Weak authentication methods such as SMS or a phone call
- Free or outdated authentication tools that have frustrating user experiences and poor documentation
- A lack of identity threat detection and response



21%

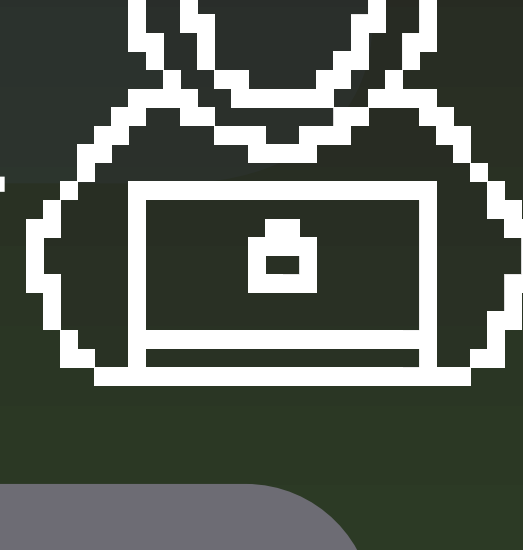
incidents involving misconfigured or improperly implemented MFA

- Cisco Talos Incident Response 2024¹

THE REALITY

But the emergence of sophisticated attacks that target user identities have changed the game. Attackers are getting more cunning in their attempts to exploit the vulnerabilities listed above.

To avoid disaster, organizations need a long-term solution that stops attacks before they start. On top of that, the solution needs to offer a good user experience that doesn't interrupt their day with multiple authentications.



25%

incidents involving a user accepting unauthorized MFA push notifications

- Cisco Talos Incident Response 2024¹

THE NEW FIX

Duo's newest functionality, **Continuous Identity Security**, was built with all this in mind. It provides extra layers of security that bolster your organization's security posture while removing the typical headaches users face with authentication.



40%

less time spent authenticating with Continuous Identity Security

- Duo Beta Test²

DUO CONTINUOUS IDENTITY SECURITY

Grants access to company apps with one login via SSO

Eliminates the need to reauthenticate after the initial login

Reacts dynamically to identity risk using powerful threat detection capabilities

Allows longer sessions without interruptions, enabling continuous productivity

SET IT AND FORGET IT

This approach streamlines the login experience, so you don't have to worry about your workday being interrupted – while knowing that Duo has your back when risk is detected.

LEARN MORE ABOUT CONTINUOUS IDENTITY SECURITY

[EXPLORE NOW](#)

[OR START YOUR FREE TRIAL](#)

¹ Cisco Talos Incident Response 2024

² Duo Beta Test